



Patented Product



High Volume Low Speed Fans

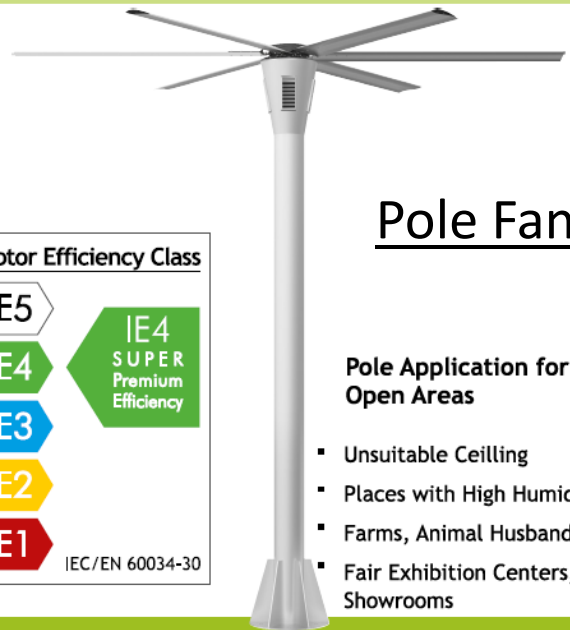
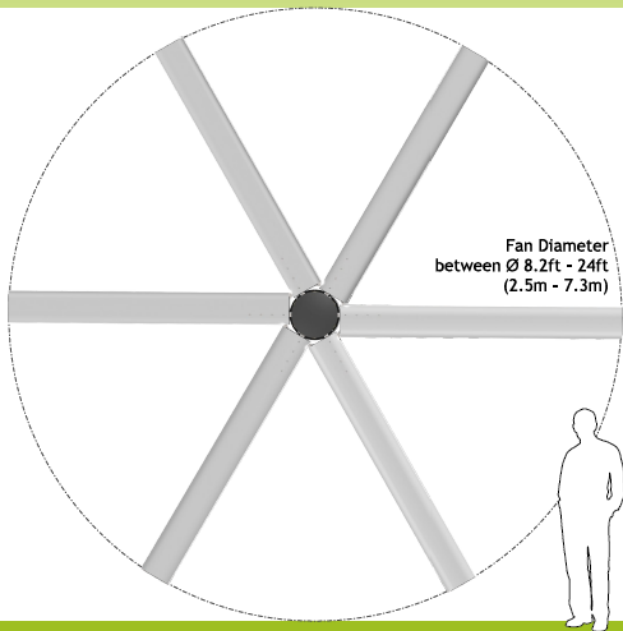
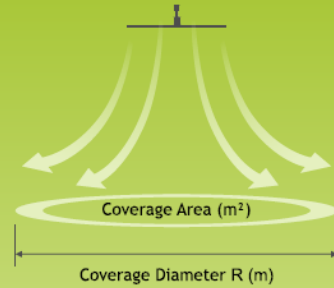
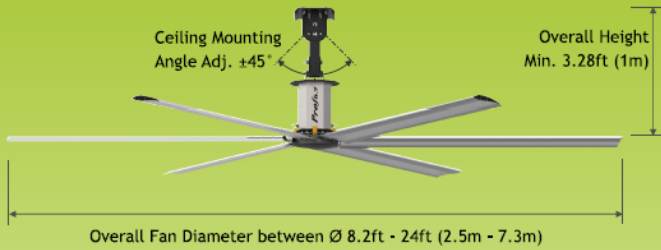


- Direct Drive Silent Motor Option, < 45dBA
- 6 Blades, Fan Sizes up to 7.3meter (24 ft)
- Save Up to 30 % on Fuel Costs
- Summer Cooling - Winter Destratification
- Pole Application for Open Areas

“ Reduce Energy Costs with High Volume Low Speed Fans ”



Ceiling Fans



Pole Fans

Motor Efficiency Class

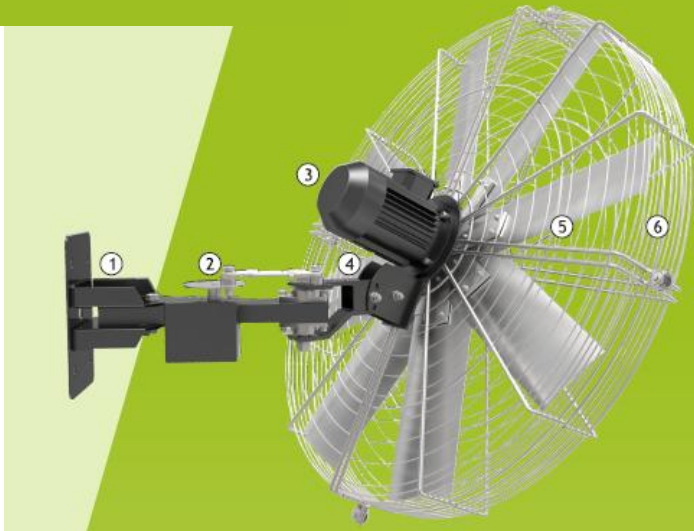
IE5	<p>IE4 SUPER Premium Efficiency</p>
IE4	
IE3	
IE2	
IE1	

IEC/EN 60034-30

Pole Application for Open Areas

- Unsuitable Ceiling
- Places with High Humidity
- Farms, Animal Husbandry
- Fair Exhibition Centers, Showrooms

Pivot Social Fans



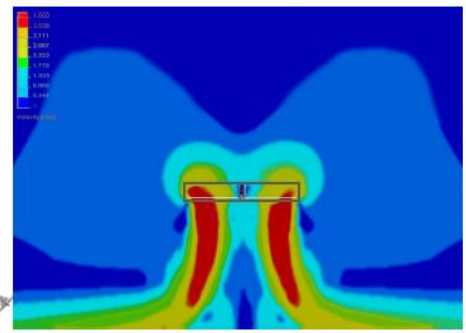
Mounting & Details

- Designed with user's comfort and safety in mind.
- Custom mounting solutions
- Fan can be mounted to different construction profiles.
- Safety cage standardly available.
- Fans are tested and simulated for best results.

- 1 Adjustable Ceiling or Column Mounting Bracket
- 2 160° Oscillating Function
- 3 Inverter Control AC Motor
- 4 Horizontal Pivot Adjustable Head
- 5 Aerodynamic Aluminium Blades
- 6 Galvanized Fan Cage

Mounting & Details

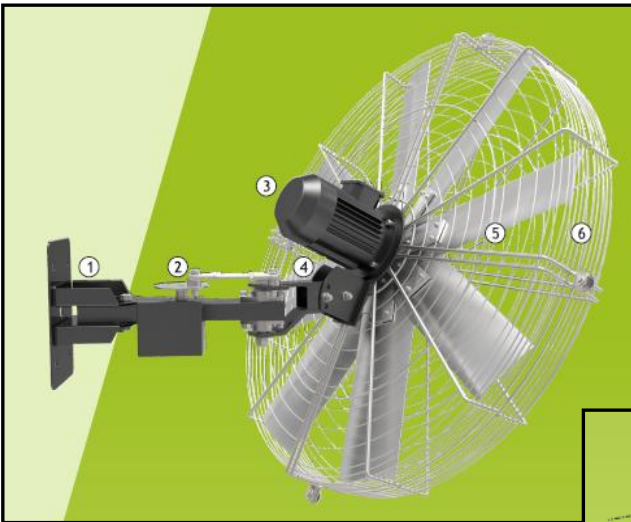
- Designed with user's comfort and safety in mind.
- Custom mounting systems for customers
- Fan can be mounted to different construction profiles.
- Safety Cable secures the fan to the mounting structure.
- Fans are tested and simulated for best results.



Patented Product

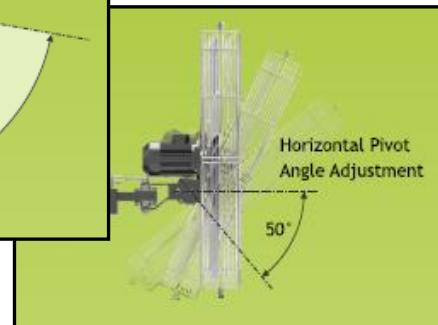
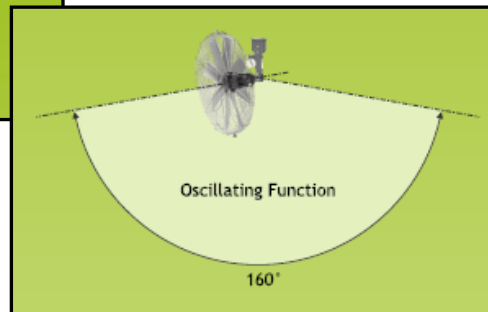
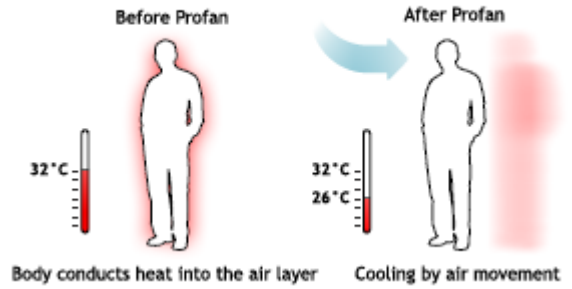


- 1 Double Pivot Adjustable Mount
- 2 Secure Safety Cable
- 3 Direct Drive Permanent Magnet AC Motor or Gear Reducer AC Motor
- 4 Secure Hook for Hub
- 5 Secure Safety Joints
- 6 Fan Hub and Bottom Cover
- 7 Aerodynamic Aluminium Blades



- 1 Adjustable Ceiling or Column Mounting Bracket
- 2 160° Oscillating Function
- 3 Inverter Control AC Motor
- 4 Horizontal Pivot Adjustable Head
- 5 Aerodynamic Aluminium Blades
- 6 Galvanized Fan Cage

Summer Cooling



Technical Specification (Permanent Magnet AC Motor)

Order Code	Fan Diameter Ø (mm)	Maximum Speed (Rpm)	Motor Power (KW)	Maximum Speed P. Consumption (KWh)	Torque (N.m)	Maximum Speed System Current (Amps)	Airflow (m³/s)	Coverage Area (m²)	Coverage Diameter R (m)	Weight (kg)
PROFAN P18	18ft (5.49m)	65	0.82	0.63	120	3.8	86	1310	41	127
PROFAN P20	20ft (6.10m)	60	0.82	0.71	120	4.1	107	1490	44	134
PROFAN P22	22ft (6.71m)	60	1.16	0.92	170	5.5	132	1750	47	150
PROFAN P24	24ft (7.32m)	60	1.16	1.02	170	6.0	167	2050	51	155

Technical Specification (Gear Reducer AC Motor)

Order Code	Fan Diameter Ø (mm)	Maximum Speed (Rpm)	Motor Power (KW)	Maximum Speed P. Consumption (KWh)	Maximum Speed System Current (Amps)	Airflow (m³/s)	Coverage Area (m²)	Coverage Diameter R (m)	Weight (kg)
PROFAN R18	18ft (5.49m)	61	1.5	1.2	5.7	84	1280	40	123
PROFAN R20	20ft (6.10m)	65	2.2	1.9	8.7	109	1495	44	133
PROFAN R22	22ft (6.71m)	65	2.2	2	8.8	134	1760	47	138
PROFAN R24	24ft (7.32m)	65	2.2	2.1	8.9	169	2060	51	143

Technical Specification (Pivot Fan)

Order Code	Fan Diameter Ø (mm)	Maximum Speed (Rpm)	Motor Power (KW)	Maximum Speed P. Consumption (KWh)	Maximum Speed System Current (Amps)	Airflow (m³/s)	Coverage Area (m²)	Weight (kg)
SOSYAL3	3ft (0.91m)	300	0.75	0.3	2.5	7	95	58
SOSYAL4	4ft (1.22m)	270	1.1	0.4	2.8	10	130	65
SOSYAL5	5ft (1.52m)	220	1.5	0.5	3.6	14	190	73

*Weight of fans change depending on the length and design of mounting brackets.

*Coverage area is affected by objects such as obstructing the airflow. (columns, walls, machines, furnitures...)

Recommended Applications



- Places Where Maximum Air Movement is Required (Farms, Animal Husbandry Facilities)
- Large Buildings with High Ceilings (Warehouses, Hangars, Industrial Facilities, Malls, Shopping Centers, Sports Halls)



- Intensively Used Areas Where People Come Together (Entertaining Centers, Cafeterias, Libraries, Museums, Theater, Opera, Concert Halls, Fair Exhibition Centers, Showrooms)



บริษัท บางกอก เอชวีแอลเอส จำกัด
 11/23 ถ. นครินทร์ ต. บางขุนทอง
 อ. บางกรวย จ. นนทบุรี 11130
 โทร (02) 459 5564 แฟกซ์ (02) 459 5964
 sale@bangkokhvls.com
 เลขประจำตัวผู้เสียภาษี 0125555015746

Bangkok HVLS co.,ltd.
 11/23 Nakornin RD., Bangkhunkong,
 Bangkray, Nonthaburi ,
 Thailand 11130
 Tel: +662 459 5564 Fax: +662 459 5964
 sale@bangkokhvls.com